



MEAT PRODUCTS



About us

Bella Bulgaria AD is among the most dynamic players in the Bulgarian food industry. The company specializes in the manufacture of delicious meat products, produced from carefully selected top quality ingredients.

The company operates several state of the art meat processing facilities, equipped with the latest production technology.

International quality certification

Bella Bulgaria AD has implemented the Food Safety Management System HACCP (Hazard Analysis and Critical Control Points), which ensures control over each stage of production - from the supply of raw materials to the ready product. In order to comply with the most rigorous international standards, our meat processing plants apply quality systems such as GMP (Good Manufacturing Practices), EN ISO 22000:2005 (International Standard Organisation), IFS (International Food Standard). The company's extensive international certification ensures the satisfaction of the requirements of the most demanding markets.

Portfolio

The company offers an extensive range of meat products– larded salami, boiled smoked delicacies, raw-dried salami, raw-dried delicacies, minced meat and formed minced meat products.

Customer satisfaction and care

Our customers' satisfaction is the company's top priority. Competent and timely customer care and extensive service are our main responsibilities.

Our modern corporate high capacity storage facilities and logistics fleet guarantee precise and timely supply to our clients.



OREHITE Pork neck Trakia

| Single product weight | Pack weight in case | Packs/kg in case | Pallet gross weight | Storage conditions | ERP CODE |
|-----------------------|---------------------|------------------|---------------------|----------------------------|-----------|
| ~200-215 g | -5 kg | 261 kg e | 48 cases | from 0°C to 5°C 90 days | 939422017 |
| -1,200 kg | -5 kg | 261 kg e | 48 cases | from 0°C to 5°C 90 days | |



OREHITE Fillet Elena

| Single product weight | Pack weight in case | Packs/kg in case | Pallet gross weight | Storage conditions | ERP CODE |
|-----------------------|---------------------|------------------|---------------------|----------------------------|-----------|
| ~200-215 g | -5 kg | 261 kg e | 48 cases | from 0°C to 5°C 90 days | 939542001 |
| -1,200 kg | -5 kg | 261 kg e | 48 cases | from 0°C to 5°C 90 days | |



Orehite Serbian sausages

| Single product weight | Pack weight in case | Packs/kg in case | Pallet gross weight | Storage conditions | ERP CODE |
|-----------------------|---------------------|------------------|---------------------|----------------------------|-----------|
| -8 kg | 8 kg | 405 kg e | 48 cases | from 0°C to 5°C 60 days | 939271001 |



Orehite delicacy zakuska Dobrudzhanska

| Single product weight | Pack weight in case | Packs/kg in case | Pallet gross weight | Storage conditions | ERP CODE |
|-----------------------|---------------------|------------------|---------------------|----------------------------|-----------|
| ~250 g | 10 kg | 501 kg e | 48 cases | from 0°C to 5°C 45 days | 939362001 |





OREHITE Flat salami lukanka

| | | | | |
|------------|---------|----------|-----------------|-----------|
| | | | | ERP CODE |
| -200-240 g | -10 kg | 501 kg e | from 0°C to 5°C | 939342001 |
| | in case | 48 cases | 90 days | |
| -720-760 g | -4.4 kg | 443 kg e | from 0°C to 5°C | 939341005 |
| | gastro | in case | 96 cases | |



OREHITE Flat salami lukanka Chardaka vac

| | | | | |
|------------|---------|----------|-----------------|-----------|
| | | | | ERP CODE |
| -200-240 g | -10 kg | 501 kg e | from 0°C to 5°C | 939572001 |
| | in case | 48 cases | 90 days | |
| -720-750 g | -4.4 kg | 443 kg e | from 0°C to 5°C | 939571002 |
| | gastro | in case | 96 cases | |



Orehite flat salami lukankov gastro

| | | | | |
|------------|---------|----------|-----------------|-----------|
| | | | | ERP CODE |
| -750-770 g | -4.5 kg | 443 kg e | from 0°C to 5°C | 939571002 |
| | in case | 96 cases | 90 days | |



OREHITE Flat Salami Lukankov Ambaritsa vac

| | | | | |
|--------|---------|----------|-----------------|-----------|
| | | | | ERP CODE |
| *250 g | 10 kg | 501 kg e | from 0°C to 5°C | 939362001 |
| | in case | 48 cases | 90 days | |



OREHITE Flat salami babek Dobrudzhansk

| | | | | |
|------------|---------|----------|-----------------|-----------|
| | | | | ERP CODE |
| -200-220 g | -10 kg | 501 kg e | from 0°C to 5°C | 939522001 |
| | in case | 48 cases | 90 days | |
| -750-770 g | -4.5 kg | 453 kg e | from 0°C to 5°C | 939522002 |
| | in case | 96 cases | 90 days | |



OREHITE Sudjuk Dobrudzhanski vac

| | | | | |
|--------|---------|----------|-----------------|-----------|
| | | | | ERP CODE |
| *200 g | -10 kg | 501 kg e | from 0°C to 5°C | 939571002 |
| | in case | 48 cases | 90 days | |



OREHITE Larded sushenitsa Dobrudzhanska vac

| | | | | |
|--------|---------|----------|-----------------|-----------|
| | | | | ERP CODE |
| *215 g | -10 kg | 501 kg e | from 0°C to 5°C | 939372002 |
| | in case | 48 cases | 90 days | |



OREHITE Larded sushenitsa Chardaka vac

| | | | | |
|--------|---------|----------|-----------------|-----------|
| | | | | ERP CODE |
| *215 g | -10 kg | 501 kg e | from 0°C to 5°C | 939372002 |
| | in case | 48 cases | 90 days | |





Orehite larded salami

| | Single product weight | Pack weight | Pallet gross weight | Storage conditions | ERP CODE |
|----------------------------------|-----------------------|------------------|---------------------|-------------------------|-----------|
| OREHITE Smoked salami vac | 250 g | 40 packs in case | 501 kg e 48 cases | from 0°C to 5°C 60 days | 939410002 |
| OREHITE Smoked salami Burgas vac | 250 g | 40 packs in case | 501 kg e 48 cases | from 0°C to 5°C 60 days | 939412001 |



OREHITE Dry-Smoked salami vac

| | Single product weight | Pack weight | Pallet gross weight | Storage conditions | ERP CODE |
|-------------------------------|-----------------------|------------------|---------------------|-------------------------|-----------|
| OREHITE Dry-Smoked salami vac | 270 g e | 34 packs in case | 462 kg e 48 cases | from 0°C to 5°C 60 days | 939452001 |



OreOREHITE Smoked salami Lukankov vac

| | Single product weight | Pack weight | Pallet gross weight | Storage conditions | ERP CODE |
|---------------------------------------|-----------------------|------------------|---------------------|-------------------------|-----------|
| OreOREHITE Smoked salami Lukankov vac | 250 g | 40 packs in case | 501 kg e 48 cases | from 0°C to 5°C 60 days | 939342003 |





Oreहितe smoked bacon

| Icon | Weight | Packaging | Quantity | Temp | Duration | ERP CODE |
|------|------------|---------------|---------------|----------|-----------------|-----------|
| | ~200-300 g | darfresh pack | 10 kg in case | 501 kg e | from 0°C to 4°C | 939423002 |
| | 10 kg | in case | 48 cases | | 30 days | |
| | ~1,500 kg | gastro | 10 kg in case | 501 kg e | from 0°C to 4°C | |
| | | | 48 cases | | 25 days | |



Oreहितe ham by round

| Icon | Weight | Packaging | Quantity | Temp | Duration | ERP CODE |
|------|-------------|---------------|---------------|----------|-----------------|-----------|
| | ~200-300 g | darfresh pack | 10 kg in case | 501 kg e | from 0°C to 4°C | 939542002 |
| | 10 kg | in case | 48 cases | | 30 days | |
| | ~1,500 kg | gastro | ~8 kg in case | 405 kg e | from 0°C to 4°C | |
| | | | 48 cases | | 25 days | |
| | ~1-1,500 kg | slice gastro | 10 kg in case | 501 kg e | from 0°C to 4°C | |
| | | | 48 cases | | 20 days | |



Oreहितe pork neck

| Icon | Weight | Packaging | Quantity | Temp | Duration | ERP CODE |
|------|-------------|---------------|---------------|----------|-----------------|-----------|
| | ~200- 215 g | darfresh pack | 10 kg in case | 261 kg e | from 0°C to 4°C | 939423001 |
| | 10 kg | in case | 48 cases | | 30 days | |
| | ~1,500 kg | gastro | ~5 kg in case | 501 kg e | from 0°C to 4°C | |
| | | | 48 cases | | 25 days | |



Oreहितe pork fillet

| Icon | Weight | Packaging | Quantity | Temp | Duration | ERP CODE |
|------|-------------|---------------|---------------|----------|-----------------|-----------|
| | ~200- 300 g | darfresh pack | 10 kg in case | 501 kg e | from 0°C to 4°C | 939420017 |
| | 10 kg | in case | 48 cases | | 30 days | |
| | ~1,500 kg | gastro | ~8 kg in case | 405 kg e | from 0°C to 4°C | |
| | | | 48 cases | | 25 days | |



Oreहितe turkey fillet

| Icon | Weight | Packaging | Quantity | Temp | Duration | ERP CODE |
|------|-------------|---------------|---------------|----------|-----------------|-----------|
| | ~200- 300 g | darfresh pack | 10 kg in case | 501 kg e | from 0°C to 4°C | 939422001 |
| | 10 kg | in case | 48 cases | | 30 days | |
| | ~1,800 kg | gastro | 8 kg in case | 405 kg e | from 0°C to 4°C | |
| | | | 48 cases | | 25 days | |

single product weight
 pack weight
 packs/kg in case
 pallet gross weight
 storage conditions



PERELIK Dry Smoked Salami vacuum

300 g 34 packs 511 kg e from 0°C to 5°C 934412002
 in case 48 cases 60 days



PERELIK Dry Smoked Salami Delicacy vacuum

270 g 34 packs 462 kg e from 0°C to 5°C 934412003
 in case 48 cases 60 days



PERELIK Panagyurska Lukanka flat salami vacuum

220 g 30 packs 338 kg e from 0°C to 5°C 934242002
 in case 48 cases 90 days





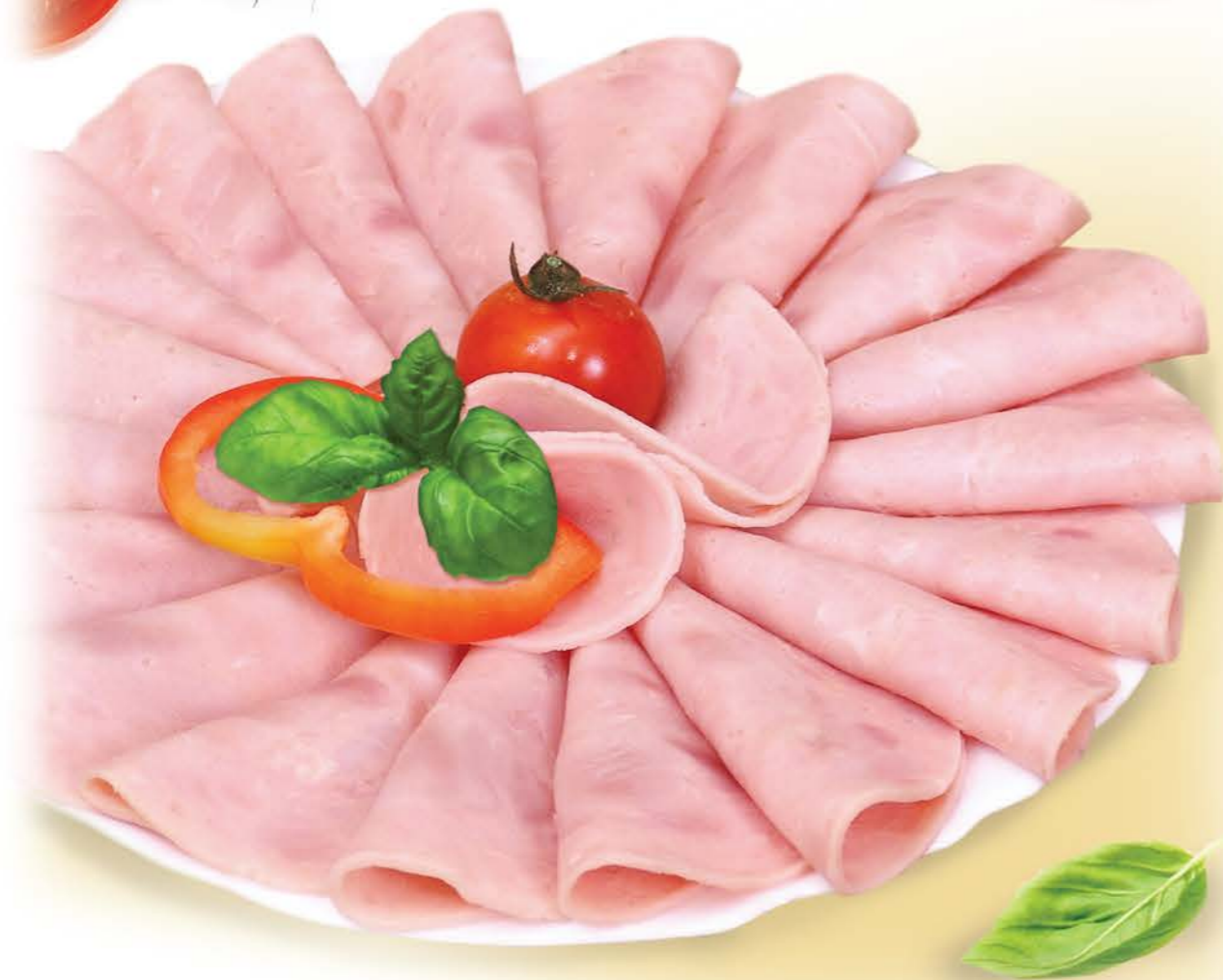
Sachi frankfurters

| | | | | | ERP CODE |
|------------------------------------|----------------|------------------|-------------------|-------------------------|-----------|
| SACHI Frankfurter Classic vacuum | 270 g | 30 packs in case | 410 kg e 48 cases | from 0°C to 4°C 60 days | 931262009 |
| Frankfurters-classic pork | 900 kg 10 pcs. | 10 packs in case | 435 kg e 48 cases | from 0°C to 4°C 60 days | 931432007 |
| SACHI Frankfurter Hot Dog vacuum | 260 g | 30 packs in case | 395 kg e 48 cases | from 0°C to 4°C 60 days | 931262004 |
| SACHI Frankfurter "Chicken" vacuum | 400 g | 30 packs in case | 597 kg e 48 cases | from 0°C to 4°C 60 days | 931262006 |
| SACHI Frankfurter "Chicken" vacuum | 10 pcs. | 10 packs in case | 501 kg e 48 cases | from 0°C to 4°C 60 days | 931432002 |



SACHI Frankfurter for kids - vacuum

| | | | | | ERP CODE |
|-------------------------------------|-------|------------------|-------------------|-------------------------|-----------|
| SACHI Frankfurter for kids - vacuum | 260 g | 30 packs in case | 395 kg e 48 cases | from 0°C to 4°C 60 days | 931432002 |



Leki smoked salami

| | g | packs in case | kg e in case | storage conditions | ERP CODE |
|-----------------------------|---------|------------------|--------------|----------------------------|-----------|
| Smoked salami vacuum | 240 g e | 34 packs in case | 413 kg e | from 0°C to 5°C 60 days | 933582002 |
| Smoked salami Burgas vacuum | 240 g e | 34 packs in case | 413 kg e | from 0°C to 5°C 60 days | 933582002 |

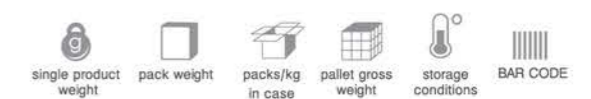


Leki ham

| | g | packs in case | kg e in case | storage conditions | ERP CODE |
|------------------|-------|------------------|--------------|----------------------------|-----------|
| Leki ham classic | 300 g | 30 packs in case | 453 kg e | from 0°C to 4°C 60 days | 933310001 |
| Leki ham turkey | 300 g | 30 in packs | 453 kg e | from 0°C to 4°C 60 days | 933310002 |

Leki Parizers

| | g | packs in case | kg e in case | storage conditions | ERP CODE |
|--------------------------|-------|------------------|--------------|----------------------------|-----------|
| LEKI Parizers Teleshki | 300 g | 30 packs in case | 453 kg e | from 0°C to 4°C 60 days | 933461002 |
| LEKI Parizers Hamburgski | 300 g | 30 packs in case | 453 kg e | from 0°C to 4°C 60 days | 933461001 |
| LEKI Parizers Kamchia | 300 g | 30 packs in case | 453 kg e | from 0°C to 4°C 60 days | 933461003 |





Leki frankfurters

| single product weight | pack weight | packs/kg in case | pack weight | packs/kg in case | storage conditions | ERP CODE |
|-----------------------|------------------|------------------|-------------|------------------|--------------------|-----------|
| 400 g e | 30 packs in case | 597 kg e | 48 cases | 60 days | from 0°C to 4°C | 933262003 |
| 8 x 1 kg pac | 8 kg in case | 405 kg e | 48 cases | 60 days | from 0°C to 4°C | 933431002 |
| 6 x 2 kg pac | 12 kg in case | 453 kg e | 36 cases | 60 days | from 0°C to 4°C | 933431001 |



LEKI Frankfurters Praga vacuum

| | | | | |
|-----------------|------------------|----------|----------|---------------------|
| 300 g | 30 packs in case | 453 kg e | 48 cases | ERP CODE 933432002z |
| from 0°C to 4°C | 60 days | | | |



LEKI Frankfurters "Frankfurter" vacuum

| | | | | |
|-----------------|------------------|----------|----------|--------------------|
| 190 g | 30 packs in case | 295 kg e | 48 cases | ERP CODE 933432003 |
| from 0°C to 4°C | 60 days | | | |



Leki Macedonian sausage

| Single product weight | Pack weight | Pallet gross weight | Storage conditions | ERP CODE |
|-----------------------|--------------------|----------------------|----------------------------|-----------|
| ~ 380- 400 g 2 pcs | ~ 12 kg in case | 597 kg e 48 cases | from 0°C to 4°C 60 days | 933272001 |
| 8 x 1 kg pac | 8 packs in case | 405 kg e 48 cases | from 0°C to 4°C 60 days | 933531002 |
| 5 x 2 kg pac | 10 kg in case | 381 kg e 36 cases | from 0°C to 4°C 60 days | 933531005 |



LEKI Balkanian Sausage with spices vacuum

| Single product weight | Pack weight | Pallet gross weight | Storage conditions | ERP CODE |
|-----------------------|--------------------|----------------------|----------------------------|-----------|
| ~ 380- 400 g 2 pcs | ~ 12 kg in case | 597 kg e 48 cases | from 0°C to 4°C 60 days | 933532002 |



LEKI Lionese sausage with Gauda cheese vacuum

| Single product weight | Pack weight | Pallet gross weight | Storage conditions | ERP CODE |
|-----------------------|---------------------|----------------------|----------------------------|-----------|
| 400 g 2 pcs | 30 packs in case | 597 kg e 48 cases | from 0°C to 4°C 60 days | 933272004 |



LEKI Debartsini sausage vacuum

| Single product weight | Pack weight | Pallet gross weight | Storage conditions | ERP CODE |
|-----------------------|---------------------|----------------------|----------------------------|-----------|
| 240 g | 45 packs in case | 540 kg e 48 cases | from 0°C to 4°C 60 days | 933532001 |





Naroden smoked salami

| | g | packs in case | kg e in case | storage conditions | ERP CODE |
|------------------------------|--------|------------------|-------------------|-------------------------|-----------|
| NARODEN Smoked Salami vacuum | 250 g | 34 packs in case | 429 kg e 48 cases | from 0°C to 5°C 60 days | 932412002 |
| NARODEN Smoked Salami gastro | ~800 g | ~5.6 kg in case | 245 kg e 40 cases | from 0°C to 5°C 60 days | 932412003 |

Naroden smoked salami Burgas

| | g | packs in case | kg e in case | storage conditions | ERP CODE |
|---------------------------------------|-------|------------------|-------------------|-------------------------|-----------|
| NARODEN Smoked Salami Bourgas, vacuum | 250 g | 34 packs in case | 429 kg e 48 cases | from 0°C to 5°C 60 days | 932412002 |
| NARODEN Smoked Salami Bourgas gastro | ~800g | ~5.6 kg in case | 245 kg e 40 cases | from 0°C to 5°C 60 days | 932412003 |



NARODEN Smoked Salami ½ m - in bulk

| | g | kg in case | storage conditions | ERP CODE |
|--|-------|-------------------|-------------------------|-----------|
| | 600 g | 10 kg in case | from 0°C to 4°C 60 days | 932451001 |
| | | 501 kg e 48 cases | | |



Narodna ham

| | g | packs in case | kg e in case | storage conditions | ERP CODE |
|--|-------|------------------|-------------------|-------------------------|-----------|
| | 300 g | 40 packs in case | 597 kg e 48 cases | from 0°C to 4°C 60 days | 932312002 |

Parizers



NARODEN Parizers

| | g | packs in case | kg e in case | storage conditions | ERP CODE |
|-----------------------------|-----|---------------|--------------|----------------------------|-----------|
| NARODEN Parizers Teleshki | 360 | 30 | 541 | from 0°C to 4°C 60 days | 932461005 |
| NARODEN Parizers Hamburgski | 360 | 30 | 541 | from 0°C to 4°C 60 days | 932461006 |
| NARODEN Parizers Kamchia | 360 | 30 | 541 | from 0°C to 4°C 60 days | 932461004 |

Frankfurters



NARODEN Frankfurters

| | g | packs in case | kg e in case | storage conditions | ERP CODE |
|--------------|-------|---------------|--------------|----------------------------|-----------|
| 400 g vacuum | 400 | 30 | 597 | from 0°C to 4°C 60 days | 932262001 |
| 6x 2 kg pack | ~2000 | 12 | 453 | from 0°C to 4°C 60 days | 932431001 |

Susages



Narodna sausages

| | g | packs in case | kg e in case | storage conditions | ERP CODE |
|------------------------------------|-------------|---------------|--------------|----------------------------|-----------|
| NARODNA Macedonian sausages vacuum | 400g, 2 psc | 12 | 597 | from 0°C to 4°C 60 days | 932532001 |
| NARODNA Boiled sausage vacuum | 540 g | 12 | 597 | from 0°C to 4°C 60 days | 932272002 |

SAZDARMA



NARODNA SAZDARMA

| | g | packs in case | kg e in case | storage conditions | ERP CODE |
|------------|----------|---------------|--------------|----------------------------|-----------|
| ~240-260 g | ~240-260 | 10 | 10 | from 0°C to 4°C 45 days | 932612001 |





NARODNA Minced meat

| | Weight | Packs in case | Pallet gross weight | Storage conditions | ERP CODE |
|------------------------------------|--------|------------------|---------------------|--------------------|-----------|
| NARODNA Minced meat classic | 250 g | 40 packs in case | 621 kg e 60 cases | at -18°C 90 days | 932223004 |
| NARODNA Minced meat for grill | 250 g | 40 packs in case | 621 kg e 60 cases | at -18°C 90 days | 932223002 |
| NARODNA Minced meat for sandwiches | 250 g | 40 packs in case | 621 kg e 60 cases | at -18°C 90 days | 932223003 |



NARODNO Mince Balls

| | Weight | Packs in case | Pallet gross weight | Storage conditions | ERP CODE |
|------|----------|-----------------|---------------------|--------------------|-----------|
| 70 g | 0,560 kg | 4 packs in case | 291 kg e 60 cases | at -18°C 90 days | 932203003 |
| 70 g | 1,120 kg | 4 packs in case | 291 kg e 60 cases | at -18°C 90 days | 932203004 |

NARODNO Kebapche Balls

| | Weight | Packs in case | Pallet gross weight | Storage conditions | ERP CODE |
|------|----------|-----------------|---------------------|--------------------|-----------|
| 70 g | 0,560 kg | 4 packs in case | 291 kg e 60 cases | at -18°C 90 days | 932213004 |
| 70 g | 1,120 kg | 4 packs in case | 291 kg e 60 cases | at -18°C 90 days | 932213003 |





LEKI Mince Balls frozen (HoReCa)

| | | | | | |
|-----|--------------|---------|----------|----------|-----------|
| | | | | | ERP CODE |
| 80g | 1,280 kg | 4 packs | 329 kg e | at -18°C | 936203001 |
| | 16 pcs plate | in case | 60 cases | 90 days | |



LEKI Kebabche Balls frozen (HoReCa)

| | | | | | |
|-----|--------------|---------|----------|----------|-----------|
| | | | | | ERP CODE |
| 80g | 1,280 kg | 4 packs | 329 kg e | at -18°C | 936213001 |
| | 16 pcs plate | in case | 60 cases | 90 days | |



MADZHARSKI Minced meat universal

| | | | | |
|-------|----------|----------|----------|-----------|
| | | | | ERP CODE |
| 250 g | 40 units | 621 kg e | at -18°C | 937223001 |
| | in case | 60 cases | 60 days | |





MADZHARSKI Smoked salami vacuum

| Single product weight | Pack weight | Packs/kg in case | Pallet gross weight | Storage conditions | ERP CODE |
|-----------------------|------------------|------------------|---------------------|----------------------------|-----------|
| 250 g | 40 packs in case | 501 kg e | 48 cases | from 0°C to 5°C 60 days | 937410001 |



MADZHARSKI Ham gastro

| Single product weight | Pack weight | Packs/kg in case | Pallet gross weight | Storage conditions | ERP CODE |
|-----------------------|-----------------|------------------|---------------------|----------------------------|----------|
| -3 kg | 4 packs in case | 597 kg e | 48 cases | from 0°C to 4°C 60 days | 93731100 |



MADZHARSKI Parizers

| Single product weight | Pack weight | Packs/kg in case | Pallet gross weight | Storage conditions | ERP CODE |
|---------------------------|------------------|------------------|---------------------|----------------------------|-----------|
| Parizers Teleshki 300 g | 30 packs in case | 453 kg e | 48 cases | from 0°C to 4°C 60 days | 937461005 |
| Parizers Teleshki 900 g | 12 packs in case | 541 kg e | 48 cases | from 0°C to 4°C 60 days | 937461008 |
| Parizers Hamburgski 300 g | 30 packs in case | 453 kg e | 48 cases | from 0°C to 4°C 60 days | 937461006 |
| Parizers Hamburgski 900 g | 12 packs in case | 541 kg e | 48 cases | from 0°C to 4°C 60 days | 937461009 |
| Parizers Kamchia 300 g | 30 packs in case | 453 kg e | 48 cases | from 0°C to 4°C 60 days | 937461004 |
| Parizers Kamchia 900 g | 12 packs in case | 541 kg e | 48 cases | from 0°C to 4°C 60 days | 937461007 |



MADZHARSKI Sausage Birenka vacuum

| Single product weight | Pack weight | Packs/kg in case | Pallet gross weight | Storage conditions | ERP CODE |
|-----------------------|------------------|------------------|---------------------|----------------------------|-----------|
| 400 g | 30 packs in case | 597 kg e | 48 cases | from 0°C to 4°C 60 days | 937272001 |
| 5x 2 kg pack | 5 packs in case | 385 kg e | 36 cases | from 0°C to 4°C 30 days | 937531001 |





HB frankfurters

| | single product weight | pack weight | packs/kg in case | pallet gross weight | storage conditions | ERP CODE |
|-------------------------|-----------------------|----------------|------------------|---------------------|-------------------------|-----------|
| Frankfurters HB pork | ~1 kg | ~10 kg in case | 501 kg e in case | 48 cases | from 0°C to 4°C 60 days | 940262003 |
| Frankfurters HB chicken | ~1 kg | ~10 kg in case | 501 kg e in case | 48 cases | from 0°C to 4°C 60 days | 940262002 |



HB ham gastro slice square

| | single product weight | pack weight | packs/kg in case | pallet gross weight | storage conditions | ERP CODE |
|-------------------------|-----------------------|----------------|------------------|---------------------|-------------------------|----------|
| Ham gastro slice square | ~1,5-1,6 kg | ~10 kg in case | 501 kg e in case | 48 cases | from 0°C to 4°C 15 days | 94031700 |



HB minced meat balls

| | single product weight | pack weight | packs/kg in case | pallet gross weight | storage conditions | ERP CODE |
|-------------------|-----------------------|-------------------|------------------|---------------------|--------------------|-----------|
| minced meat balls | 80g | 1,280 kg e 16 pcs | 4 packs in case | 328 kg e 60 cases | at -18°C 90 days | 940203002 |



HB minced meat kebapche

| | single product weight | pack weight | packs/kg in case | pallet gross weight | storage conditions | ERP CODE |
|----------------------|-----------------------|-------------------|------------------|---------------------|--------------------|-----------|
| minced meat kebapche | 80g | 1,280 kg e 16 pcs | 4 packs in case | 328 kg e 60 cases | at -18°C 90 days | 940213002 |





BELLA BULGARIA AD
Business Centre "Active", 8th floor,
101 Tsarigradsko Shose Blvd., 1113 Sofia, Bulgaria,
tel.: +359 2 970 37 32, fax.: +359 2 970 37 06
export@bella.bg
www.bella.bg